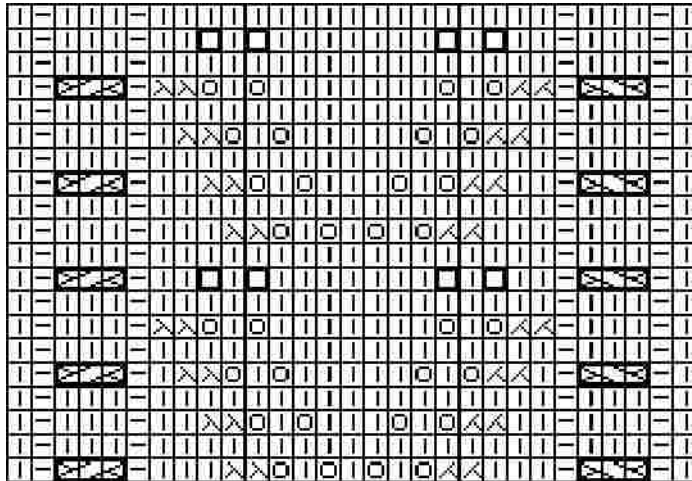


Chart A – chart used for green/yellow Kauni

Sweater



Copyright © 2009 Shelly Kang
May be reproduced for non-profit
personal use only. For more
information, see
www.shellykang.com or e-mail
shellyk@shellykang.com

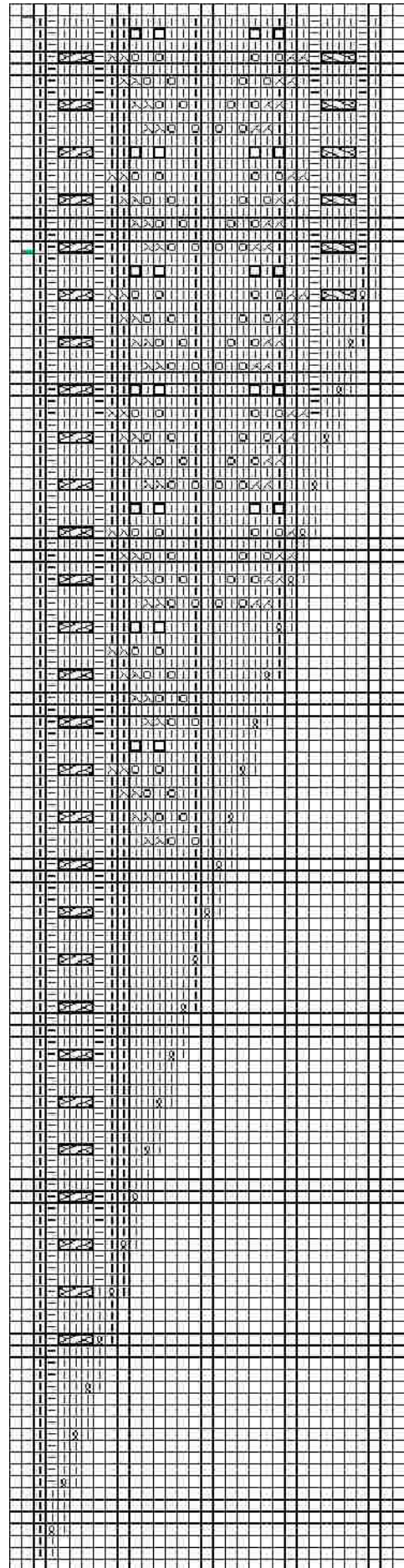
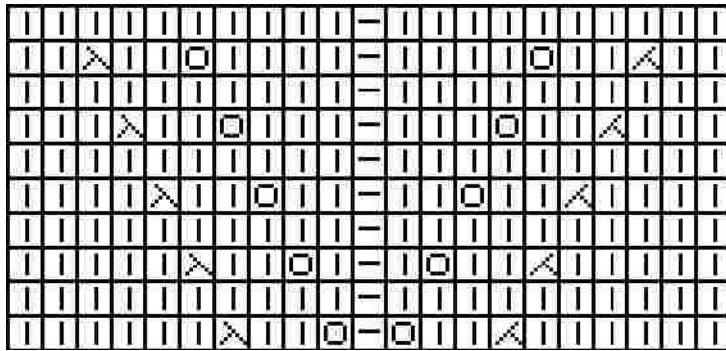


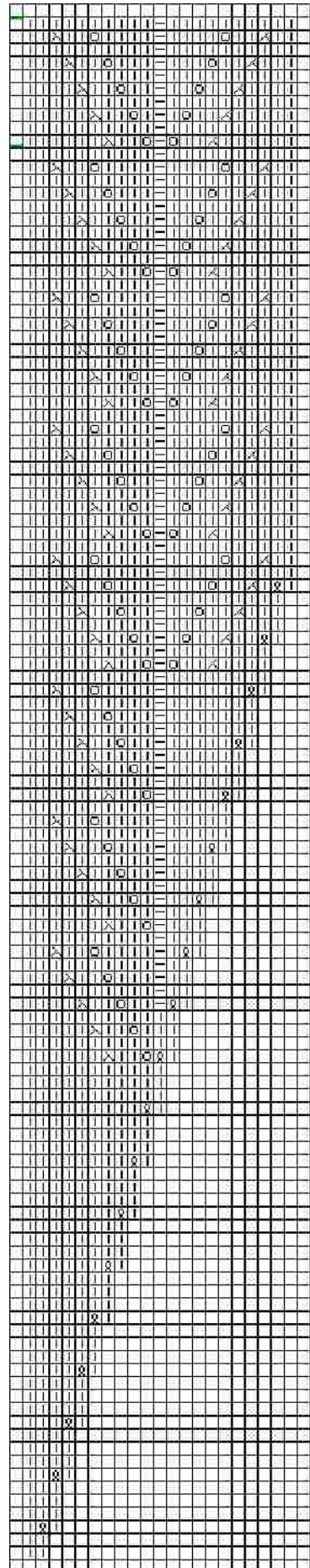
Chart B – chart used for original sweater







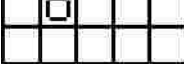



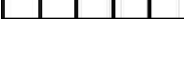
Copyright© 2009 Shelly Kang

May be reproduced for non-profit personal use only. For more information, see

www.shellykang.com or e-mail shellyk@shellykang.com



Key

	Knit
	Purl
	Knit Two Together
	Slip Slip Knit
	Yarnover
	Lifted Increase or M1
	Bobble
	Cable 3 Left
	Cable 3 Right

Bobble: K1, P1, K1 into the same stitch; turn and P3, turn and K3, turn and P3, turn and K3Tog

Cable 3 Left: Hold one stitch to the front on cable needle, K2, K stitch from cable needle

Cable 3 Right: Hold two sts to the back on cable needle, K1, K sts from cable needle.

Copyright © 2009 Shelly Kang

May be reproduced for non-profit
personal use only. For more
information, see

www.shellykang.com or e-mail

shellyk@shellykang.com